



# Supported Social Gaming for Autism & Neurodiversity



←  
scan to  
find out more



10/5 Poinciana St,  
Caboolture South



[www.gamelyconnect.com](http://www.gamelyconnect.com)

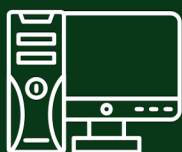
# the first session is *completely free*



Weekly four-hour sessions with small numbers in each session



Tailored, accessible, low-sensory space with experienced support workers



Each participant has a Gaming PC reserved for them to play solo or collaboratively



The space also features gaming consoles, virtual reality simulators, an extensive collection of board games, Dungeons and Dragons setup and more



Snacks and beverages included



Pick-up and drop-off service available

**Spaces are limited**  
**Find out more or reserve**  
**a spot by contacting Ellis**



0424644463



[ellis@gamelyconnect.com](mailto:ellis@gamelyconnect.com)

